



**GoodaleMillerTeam**  
CENTURY 21 MILLER REAL ESTATE LTD. BROKERAGE



935 Harvey Place | Burlington





## LUXURY CUSTOM BUILD STEPS TO BURLINGTON GOLF & COUNTRY CLUB

Nestled on a private cul-de-sac in the prestigious LaSalle neighbourhood, this luxurious custom home, rebuilt and re-imagined in 2024 by Interface Construction, integrating part of the existing foundation, offers 3,481 sq. ft. of finished living space above grade. Just a short walk to the Burlington Golf & Country Club and minutes from Lake Ontario and LaSalle Park, the location is as desirable as it is convenient.

Step inside to a grand foyer with soaring vaulted ceilings leading into the open-concept living and dining areas. The living room is anchored by a Trumeau fireplace, creating a warm and inviting ambiance, while the dining room with decorative nook is perfect for hosting. The chef's kitchen combines function and flow, featuring a large island, premium appliances, custom cabinetry by Imatree Cabinets & Woodworking, and seamless connection to both the dining room and the family room. With vaulted ceilings, expansive windows, and views of the rear yard, the family room is filled with natural light. A mudroom with powder room access and a rare drive-through garage entry complete the main floor.

Upstairs, a unique recreation room adds versatile living space, ideal as a fourth bedroom, lounge, media room, office, or homework hub. The upper level also includes a sitting area overlooking the foyer, a serene primary suite with vaulted ceilings, custom cabinetry, spa-like 5-piece ensuite, and walk-in closet, plus two additional spacious bedrooms with a shared 4-piece bath.

Designed for both relaxation and entertaining, the backyard offers two expansive concrete patios, professional landscaping and mature trees for privacy.

From its elegant interiors to its private outdoor spaces, this home was designed for both everyday living and unforgettable entertaining.





FOYER & LIVING ROOM

LIVING ROOM & DINING ROOM









KITCHEN



KITCHEN







FAMILY ROOM

MUDROOM & POWDER ROOM





UPPER LEVEL SITTING AREA



FOURTH BEDROOM / RECREATION ROOM







PRIMARY BEDROOM

PRIMARY ENSUITE





SECOND & THIRD BEDROOMS



MAIN BATHROOM







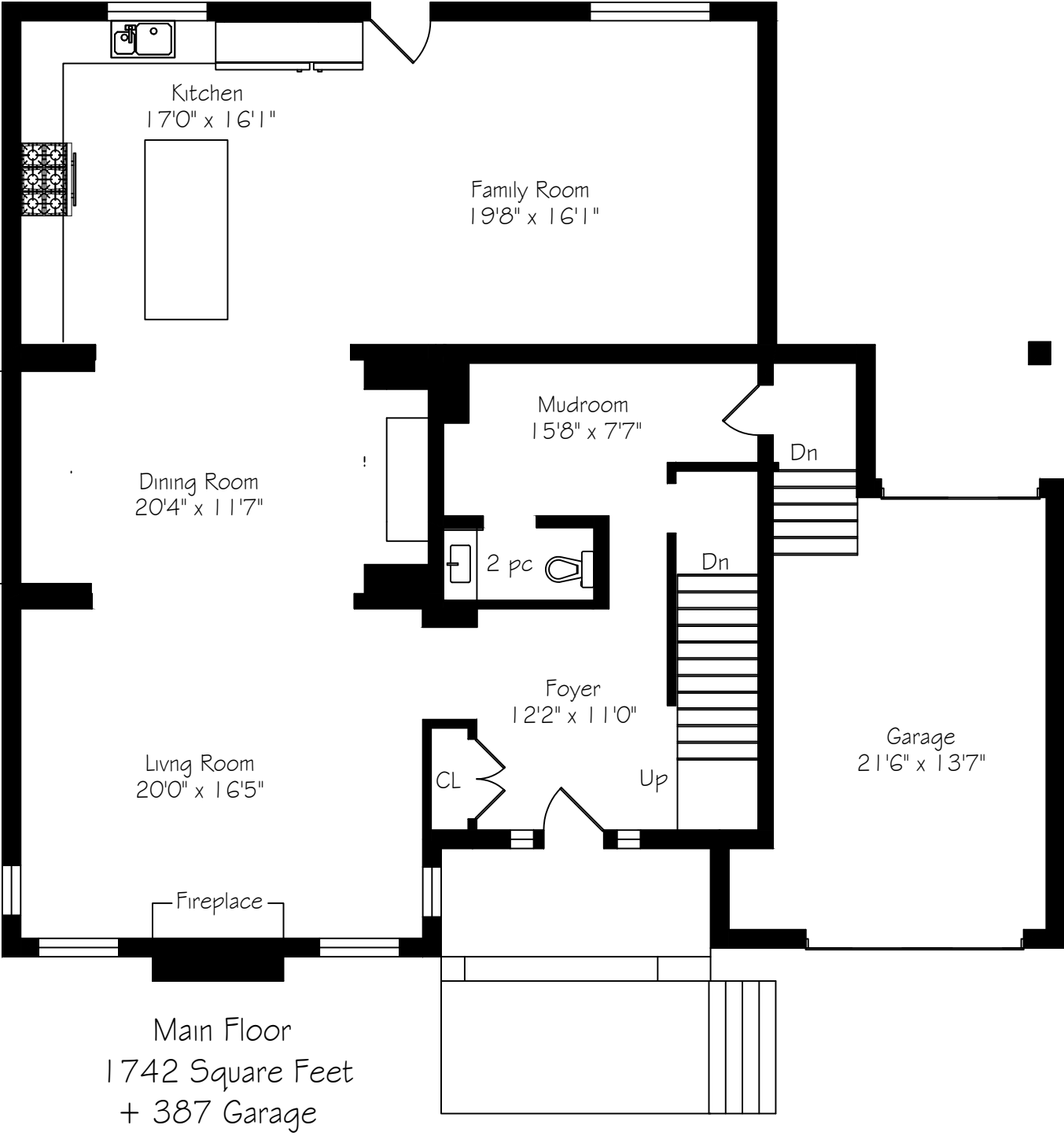


REAR YARD

REAR YARD

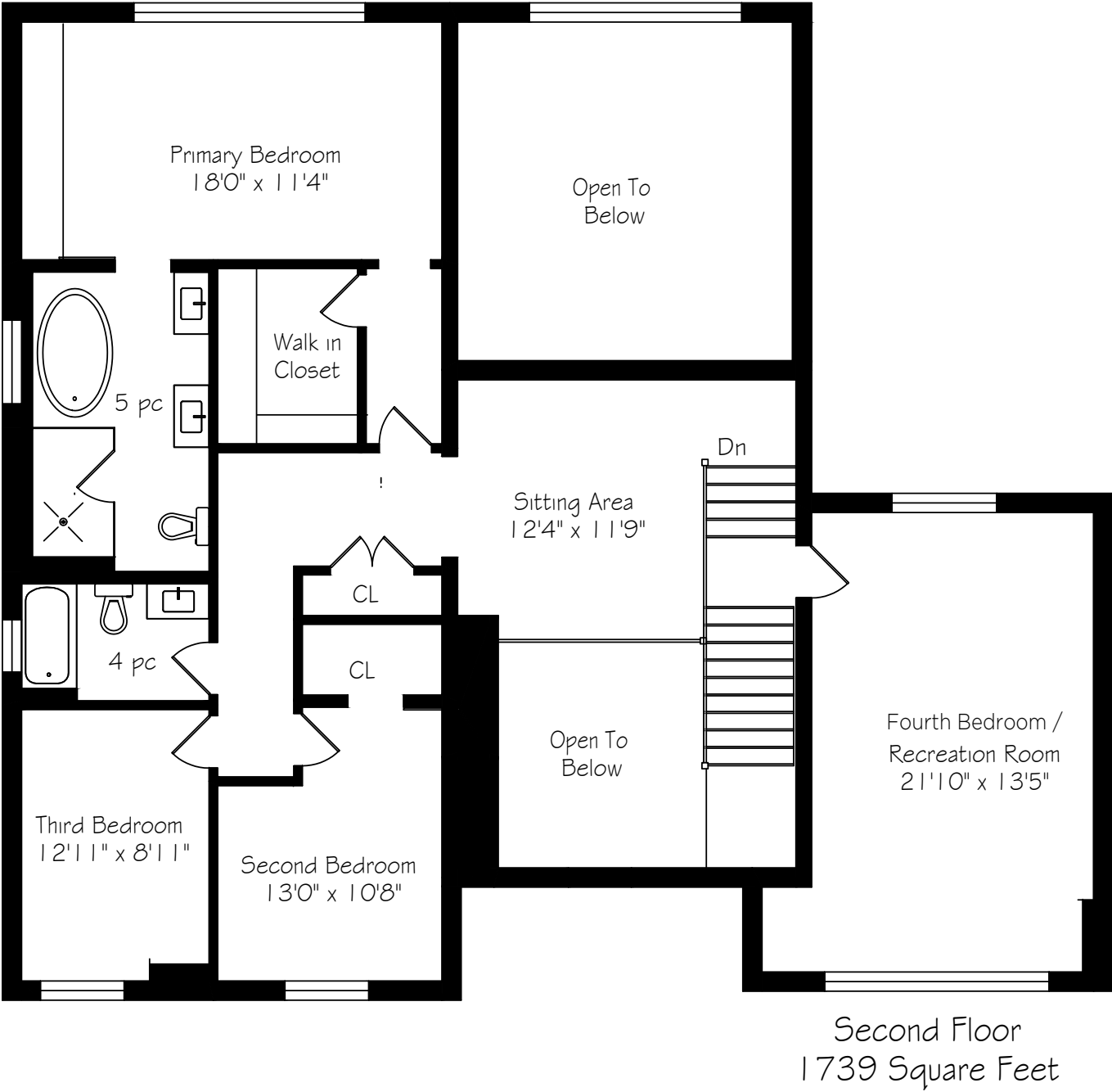


MAIN LEVEL FLOOR PLAN



\*Room sizes should be considered approximate since measurements are subject to certification.

SECOND LEVEL FLOOR PLAN

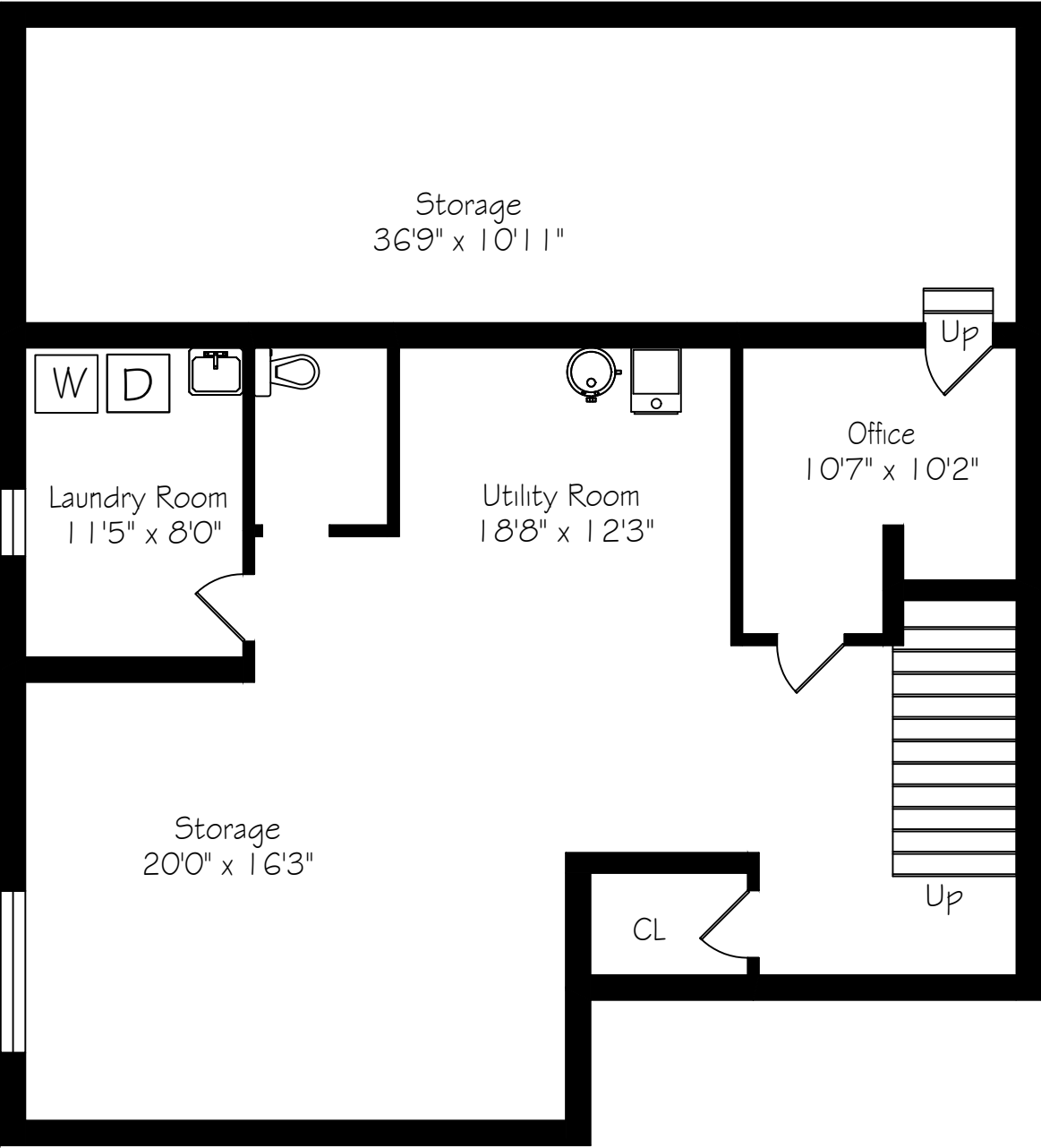


\*Room sizes should be considered approximate since measurements are subject to certification.

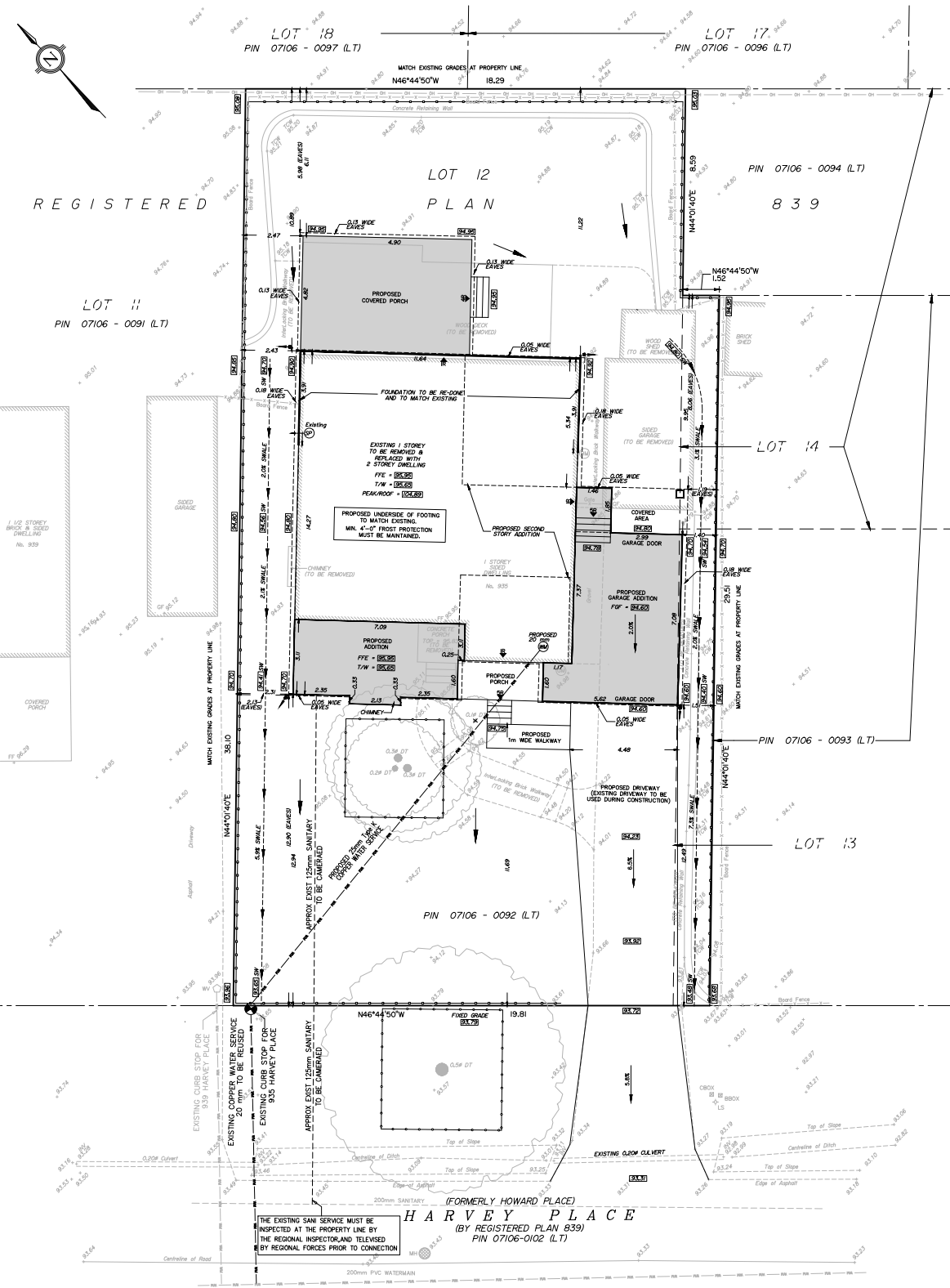


LOWER LEVEL FLOOR PLAN

SITE PLAN



Lower Level  
1546 Square Feet



\*Room sizes should be considered approximate since measurements are subject to certification.



# LUXURY FEATURES

## EXTERIOR FEATURES

- Oversized concrete front porch
- Concrete interlock driveway with 6 car parking
- Drive-through garage
- Rear yard with two oversized concrete patios
- Professionally landscaped
- Mature trees
- Fully waterproofed foundation

## - MAIN FLOOR -

### FOYER

- Oversized door
- Tile flooring
- Vaulted ceiling
- Pendant lighting
- Front entrant closet
- Wall sconce
- Stairs with metal railing

### LIVING ROOM

- Open concept
- Engineered hardwood flooring
- Pendant lighting
- Trumeau fireplace
- Oversized windows

### DINING ROOM

- Open concept
- Engineered hardwood flooring
- Pendant lighting
- Decorative nook

### KITCHEN

- Open concept
- Engineered hardwood flooring
- Custom cabinetry by Imatree Cabinets & Woodworking
- Pendant lighting over island
- Custom lighting
- Undermount oversized stainless steel sink
- Built-in island with seating
- Rear door access to yard

### APPLIANCES:

- Frigidaire oversized refrigerator
- Monogram gas range with dual ovens
- Fisher Paykel dishwasher
- Vent-a-hood

### FAMILY ROOM

- Open concept
- Engineered hardwood flooring
- Oversized windows
- Vaulted ceiling
- Wall sconces

### POWDER ROOM

- Tile flooring
- Wall mounted faucet
- Wall sconce

## - SECOND FLOOR -

### FOURTH BEDROOM / RECREATION ROOM

- Engineered hardwood flooring
- Oversized windows
- Heat pumps
- Pot lights

### SITTING AREA

- Engineered hardwood flooring
- Metal railing
- Vaulted ceiling
- Pot lights
- Wall sconces

### PRIMARY BEDROOM

- Engineered hardwood floor
- Vaulted ceiling with pendant light
- Oversized window with roller shades
- Wall sconces
- Built-in custom cabinetry by Imatree Cabinets & Woodworking
- Walk-in closet

### PRIMARY ENSUITE

- Large tile floor
- Pot lights
- Wall sconces
- Glass enclosed oversized shower
- Soaker tub
- Double vanities
- Privacy window

### BEDROOM TWO

- Engineered hardwood floor
- Ceiling light
- Wall sconce
- Large window roller shades
- Closet

### BEDROOM THREE

- Engineered hardwood floor
- Large window with roller shades
- Armoire

### MAIN BATHROOM

- Tile flooring
- Bath and shower with wand
- Custom ceramic wall tiling
- Wall sconce
- Pot lights
- Armoire

## - LOWER LEVEL -

- Laundry room with washer & dryer
- Utility room
- Tankless water heater
- Unspoiled lower level awaiting your finishing touches!

\*Notwithstanding any items identified as features or inclusions in this brochure, only those items identified as inclusions in the Agreement of Purchase and sale will be deemed an inclusion.



## LISTING INFORMATION

### 935 HARVEY PLACE, BURLINGTON

**Possession:** To be arranged

**Lot Size:** 65.31' x 125.29' x 60.13' x 125.29'

**Square Footage:** 3,481 sq ft above grade

**Total Square Footage:** 5,027 sq ft

**Deposit:** 5%

**Taxes:** \$12,670 / 2025

**Legal Description:** LT 12, PL PF839; PT LTS 13 & 14, PL PF839, AS IN FH24193

**Listing Agents:** Brad Miller, Kieran McCourt & Chris Chartier





**GoodaleMillerTeam**  
CENTURY 21 MILLER REAL ESTATE LTD. BROKERAGE

905-338-2121 | **GoodaleMillerTeam.com**

9-209 Speers Rd, Oakville, ON L6K 0H5

**Follow us on**



**#1 Team Globally for Century 21 for the last 5 consecutive years**

**#1 Team in Canada for Century 21 for 21 consecutive years**